

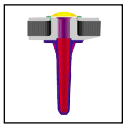
CDM™7NT

Floor-standing loudspeaker system

Product Summary

- The CDM 7NT is a floorstanding loudspeaker, exquisitely finished in a choice of real wood veneers. The extra volume and drive unit gives an extended bass response.
- Technological features include Nautilus™ tweeter, Kevlar® mid/bass driver, bass radiator with mushroom construction dustcap and Flowport™.

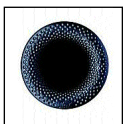
Technical highlights



Tweeter on top: B&W's Tweeter on top technology ensures that the sound remains focused and time-sensitive and that the stereo-image is presented with unparalleled three dimensional accuracy.



Kevlar®: B&W developed and patented the method of using Kevlar® for loudspeaker cones to reduce unwanted standing waves. DuPont originally created Kevlar® for use in bulletproof vests.



Flowport™: Golf ball aerodynamics theory points the way towards lower distortion reflex ports. Dimples improve the way the air flows over the surface of any object. In the case of reflex ports, they offer a significant improvement over simply flaring the port ends in reducing air flow turbulence at each end of the port; so you get less chuffing noise and less compression at high sound levels.



| | | | |
|---------------------------|---|--------------------------|--|
| Description | 2½-way vented-box system | Sensitivity | 90dB spl (2.83V, 1m) |
| Drive units | 1 x 25mm alloy dome high-frequency 1 x 165mm woven Kevlar® cone bass/midrange 1 x 165mm woven paper/Kevlar® cone bass | Nominal impedance | 8 (min 4.6) |
| Frequency response | 40Hz – 20kHz ± 3dB on reference axis | Power handling | 50W · 150W into 8 ohm on unclipped programme |
| | | Dimensions | Height: 950mm Width: 220mm Depth: 290mm |
| | | Finishes | Cabinet: Real wood veneers, Black Ash, Cherrywood, Red Stained Cherrywood Grilles: Black cloth |



LISTEN AND YOU'LL SEE